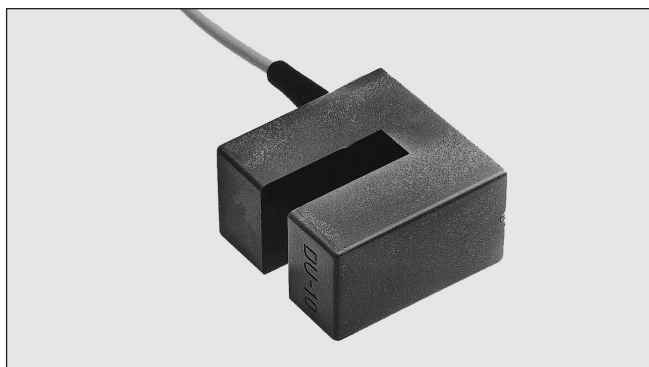


Proximity Sensors Inductive ABS Housing Type DU, Fork-shaped

CARLO GAVAZZI



- Fork-shaped ABS housing
- Slot sizes: 10 mm
- Power supply: 24 VDC
- Output: Transistor PNP, make switching
- Protection: Reverse polarity
- Shielded cable

Product Description

Special fork-shaped proximity transistor PNP, open collector switch. Slot size 10 mm. With sturdy ABS housing.

Ordering Key

1471DU 10EP-XM

Type: Inductive proximity switch

Slot size

Output type

Cable length

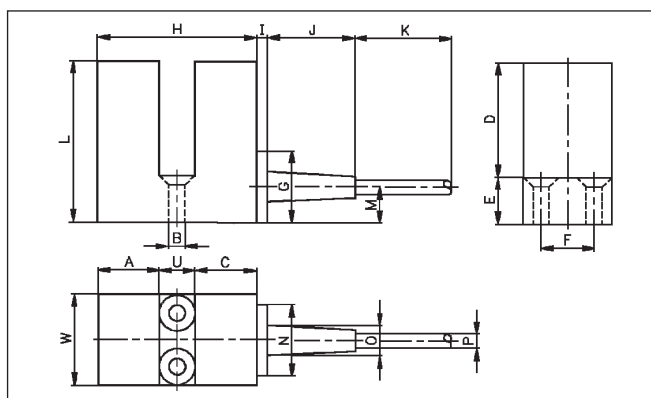
Type Selection

Slot size	Cable length	Ordering no. Transistor PNP Make switching
10 mm	2000 mm	1471DU10EP-2M
10 mm	4000 mm	1471DU10EP-4M
10 mm	6000 mm	1471DU10EP-6M

Specifications

Rated operational volt. (U_e)	24 VDC
(U_B)	21.6 to 26.4 VDC (ripple incl.)
Ripple	≤ 10%
Rated operational current (I_e)	≤ 200 mA
No-load supply current (I_o)	≤ 15 mA
Voltage drop (U_d)	≤ 1.0 V at max. load
Protection	Reverse polarity
Transient voltage	≤ 1 kV/0.5 J (prepared)
Power ON delay	None
Frequency of operating cycles (f)	1000 Hz
Size of test object (height x length x width)	16 x 20 x 1 mm, ST 37
Repeat accuracy (R)	≤ 10%
Effective operating dist. (S_r)	$0.9 \times S_n \leq S_r \leq 1.1 \times S_n$
Usable operating dist. (S_u)	$0.8 \times S_r \leq S_u \leq 1.2 \times S_r$
Ambient temperature	
Operating	-20° to +60°C (-4° to +140°F)
Storage	-25° to +70°C (-13° to +158°F)
Degree of protection	IP 67 (Nema 1, 3, 4, 6, 13)
Housing material	Blue ABS
Cable	2/4/6 m, 3 x 0.40 mm ² grey PVC, oil proof, shielded
Weight (cable included)	
1471DU10EP-2M	116 g
1471DU10EP-4M	140 g
1471DU10EP-6M	164 g

Dimensions



Type	U mm	L mm	H mm	W mm	A mm	B Ømm	C mm	D mm	E mm
	10	45	44.5	25.6	17	4.5	17	32	13
Type	F mm	G mm	I mm	J mm	K m	M mm	N mm	O Ømm	P Ømm
	15	20	2.95	24	2/4/6	10	20	8.5	4.1

Wiring Diagrams

Refer to "Wiring Diagrams", Technical Information.

Power Supplies

Power supplies VAC: > SS 110.
Power supplies VDC: > SS 130/140.

Installation Hints

Refer to "Installation Hints", Technical Information.